



Management of Dynamic Traffic Data and Connectivity into Vehicles

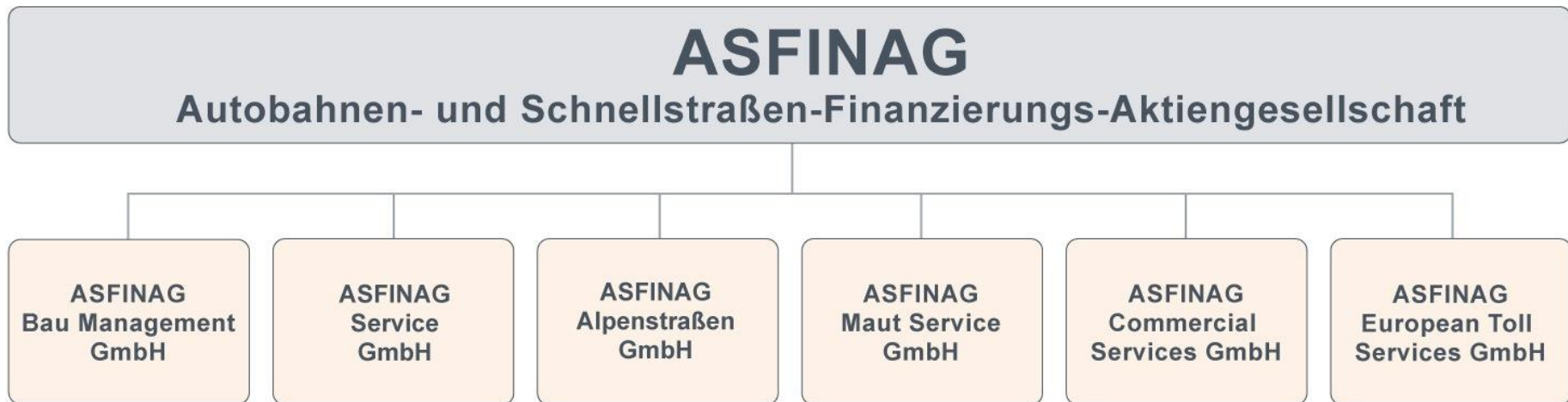
Peter Hrassnig
ASFINAG Maut Service GmbH
A3PS Conference, 10.11.2015



Agenda

- ASFINAG summary
- Traffic information from the point of view of ASFINAG
- What is dynamic traffic data?
- From „the digital road operator“ to „the connected vehicle“

The ASFINAG Group



ASFINAG Overview

Tasks:	Planning, construction, maintenance, operation, funding and tolling of motorways and expressways in Austria
Road network:	In operation: 2,183 km
Employees – group:	2,652
Motorway operation and maintenance facilities:	43
National traffic management centre:	1
Regional traffic management centres:	9
Locations:	Wien, Graz, Innsbruck, Salzburg, Ansfelden, Zirl
Financing:	Vehicles < 3.5 t: toll stickers + special tolls Trucks > 3.5 t: mileage-dependent toll



Agenda

- ASFINAG summary
- Traffic information from the point of view of ASFINAG
- What is dynamic traffic data?
- From „the digital road operator“ to „the connected vehicle“

ASFINAG focus on traffic information

ASFINAG is one of Europe's
leading motorway operator
especially recognised as
content provider
for traffic and travel information
(in Austria)

Ways to ASFINAG customer information - TODAY

Not connected vehicles

Connected vehicles



www.asfinag.at

online traffic information




www.asfinag.at/app

ASFINAG-companion for travellers




Verkehrsinfo @
0800 400 12 400

current traffic information by phone



TMC plus

navigation device



Cloud

OEM value-added services

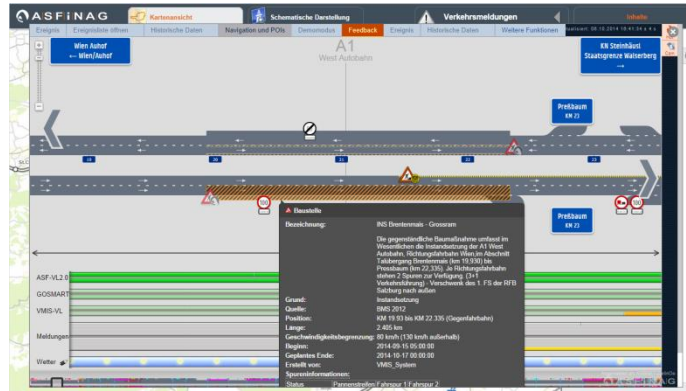
ASFINAG Services



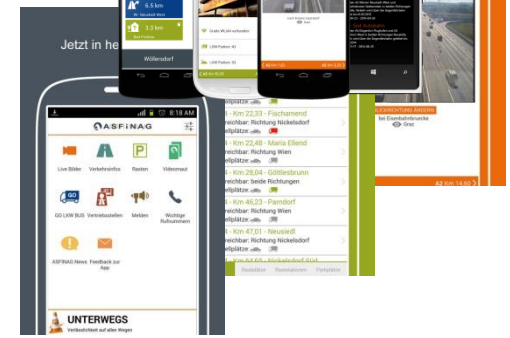
expert tools

Smartphone App

> 580 webcams

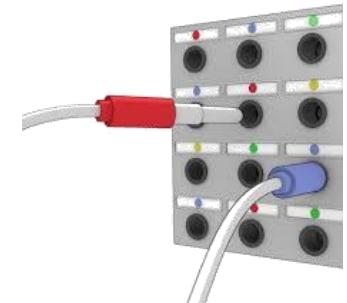
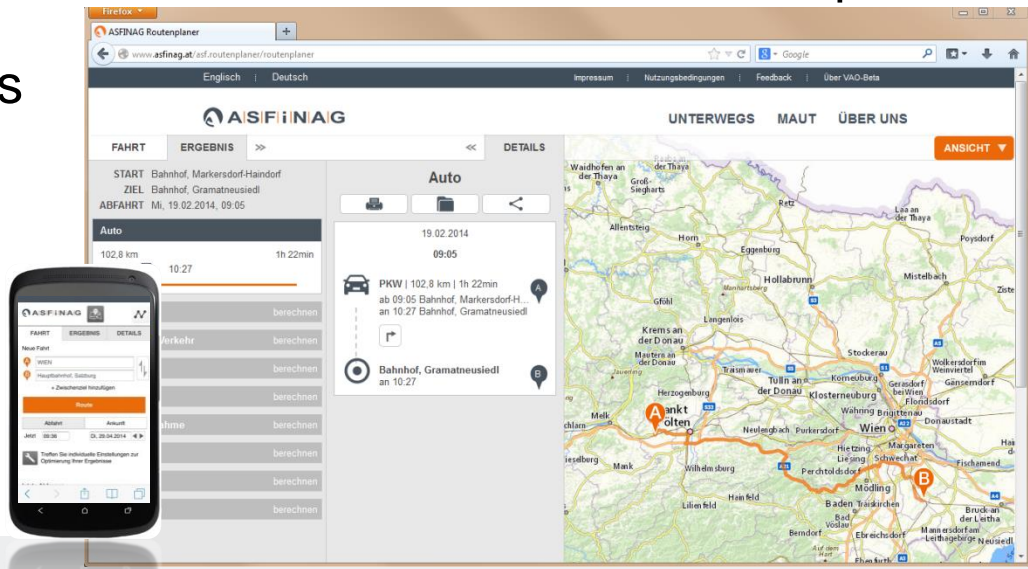


„UNTERWEGS“



VAO route planner

On Trip Services



wide variety data interfaces

Reliability all the way.



Agenda

- ASFINAG summary
- Traffic information from the point of view of ASFINAG
- **What is dynamic traffic data?**
- From „the digital road operator“ to „the connected vehicle“

ASFINAG Incident Messages

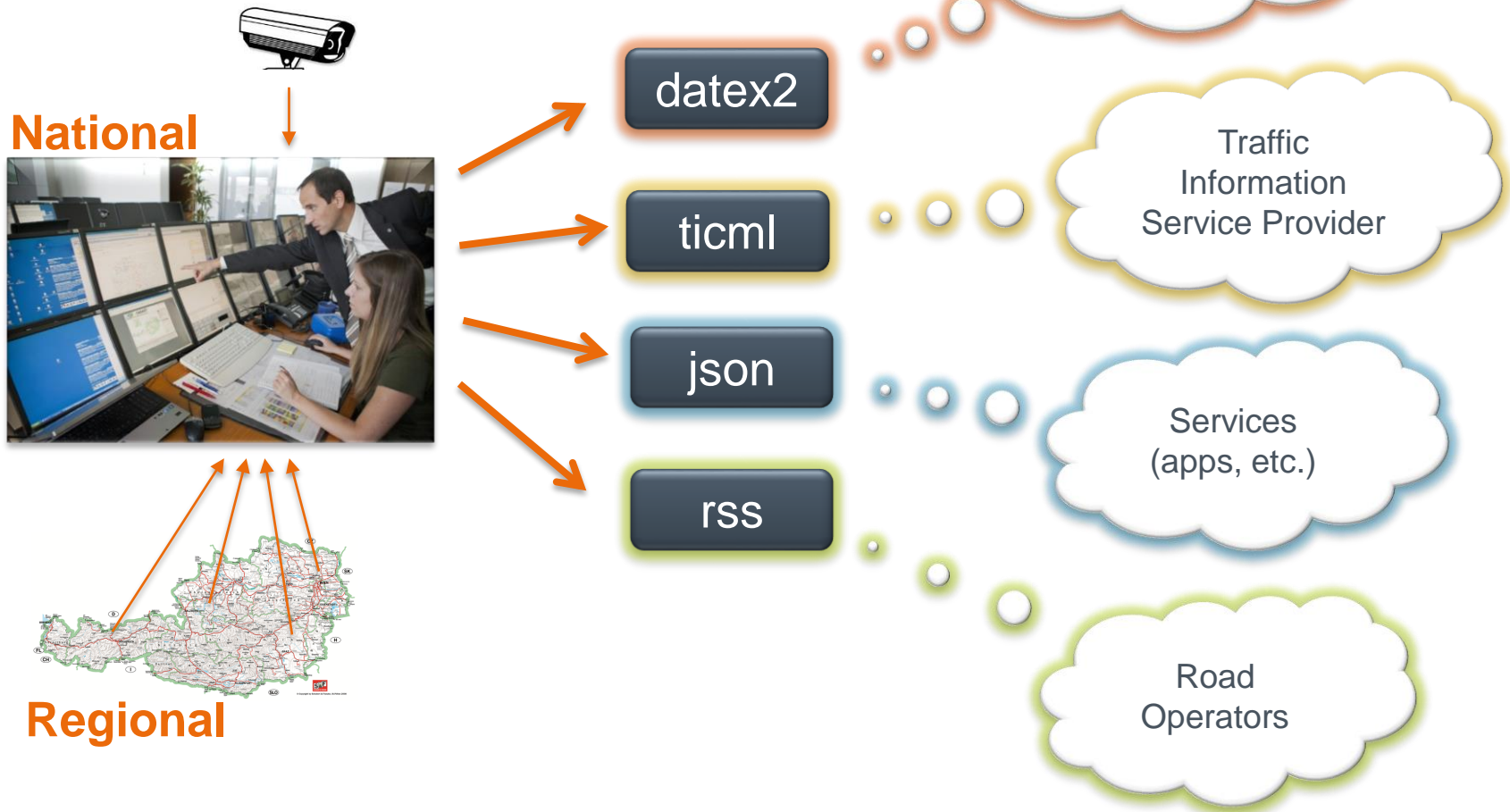
- wrong-way driver
- traffic accident
- break-down vehicle
- traffic congestion
- loss of load
- extreme weather conditions

- heavy load
- fire
- system error
- height control
- maintenance measure
- other

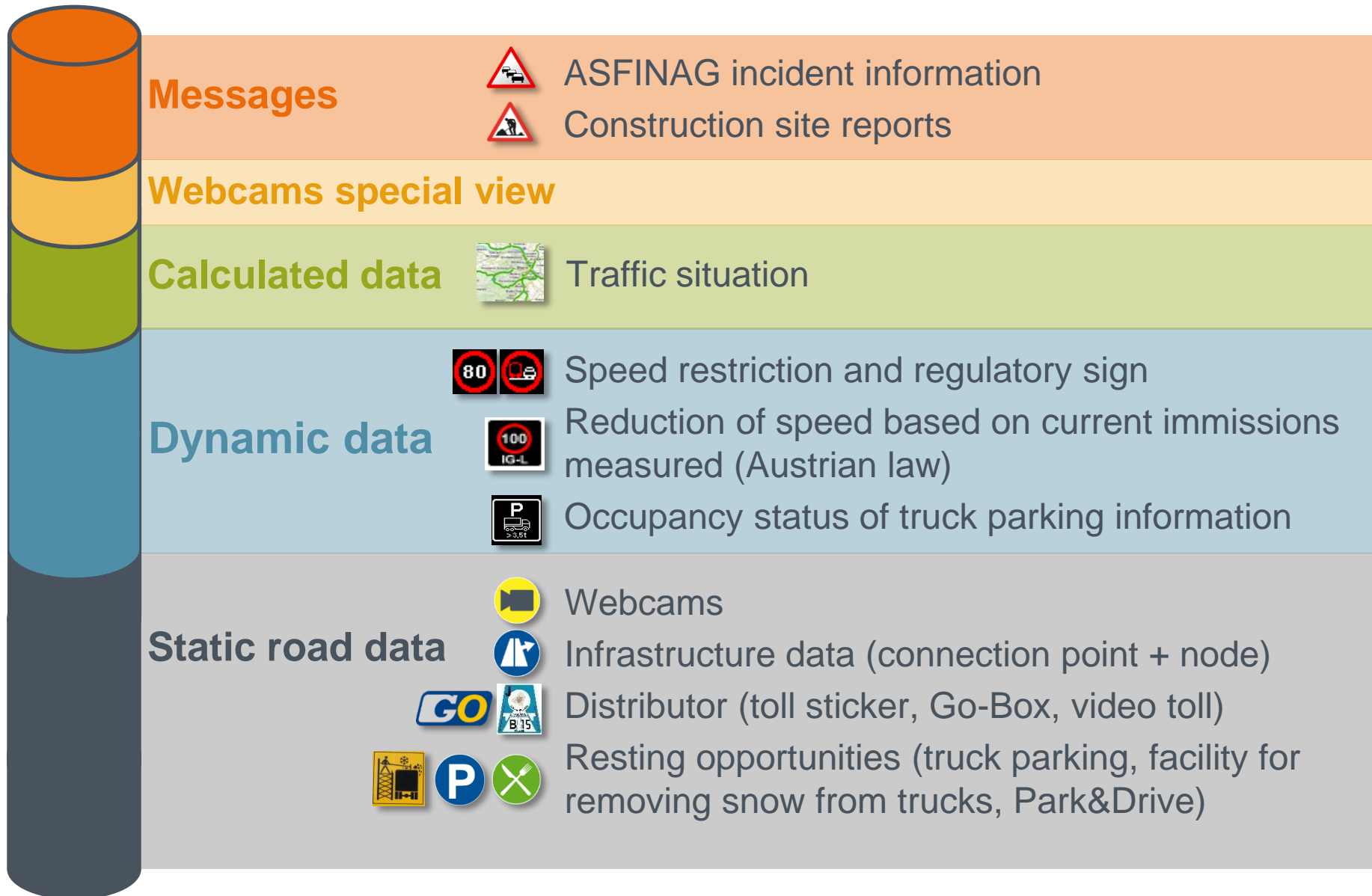


ASFINAG Incident Management

➤ From incidents to information Traffic Management Centre

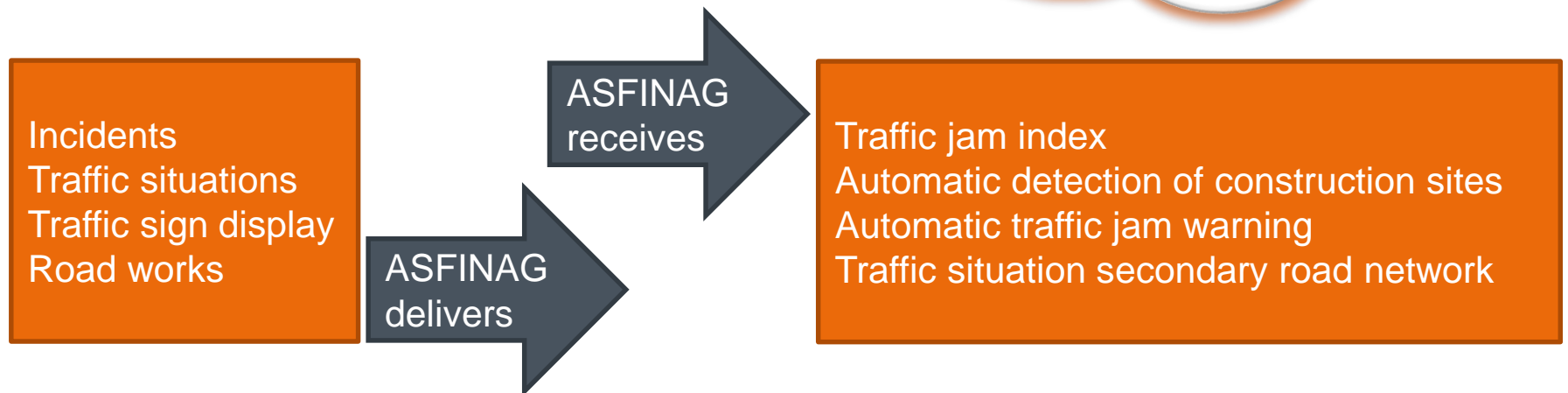


ASFINAG information content



Integration with automotive & internet

- **TELEMATICS PLUS**
„Inform as many customers as possibly with high quality real-time information.“
- Data exchange with international providers

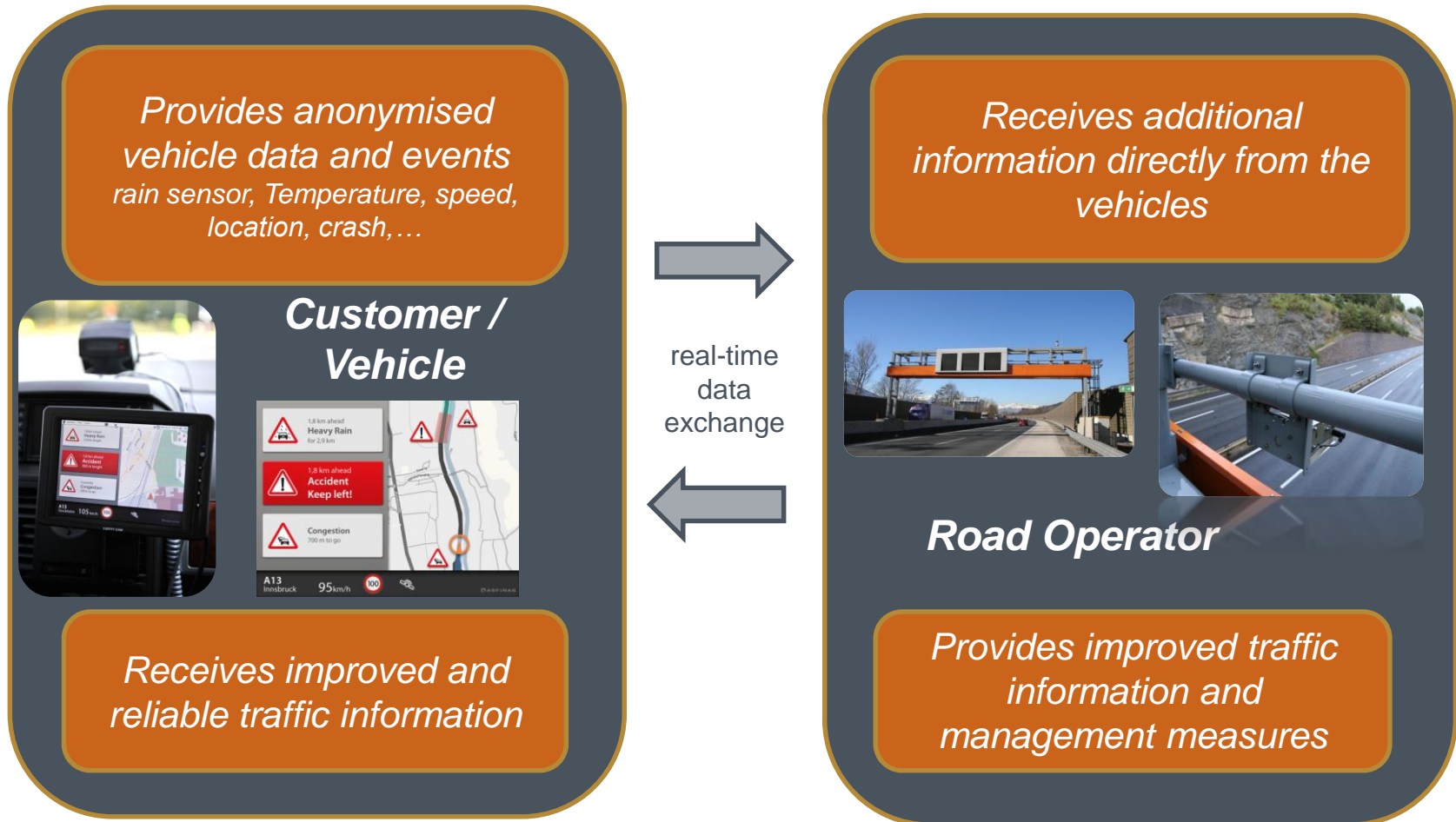




Agenda

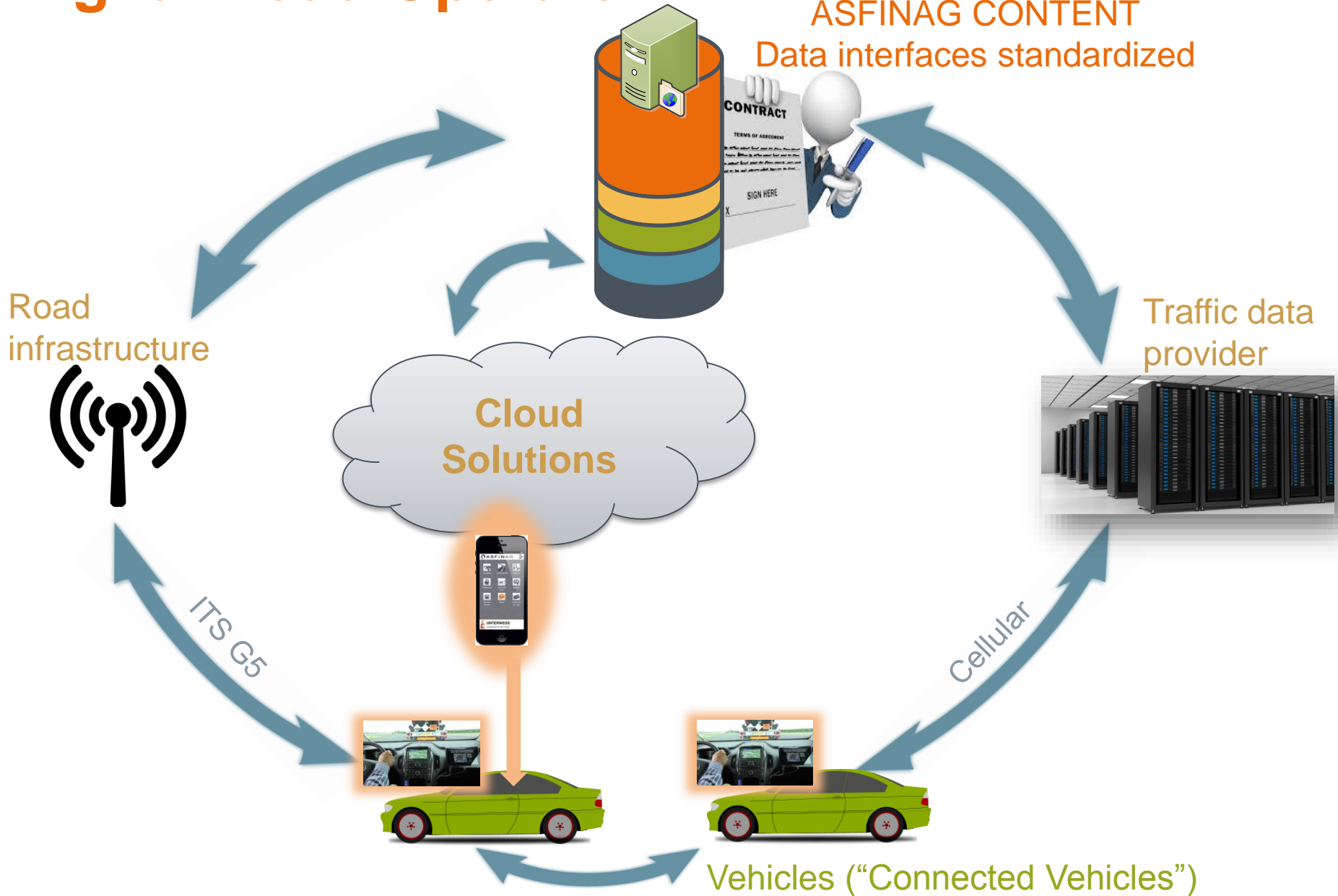
- ASFINAG summary
- Traffic information from the point of view of ASFINAG
- What is dynamic traffic data?
- From „the digital road operator“ to „the connected vehicle“

ASFINAG Vision “Cooperative Driving”

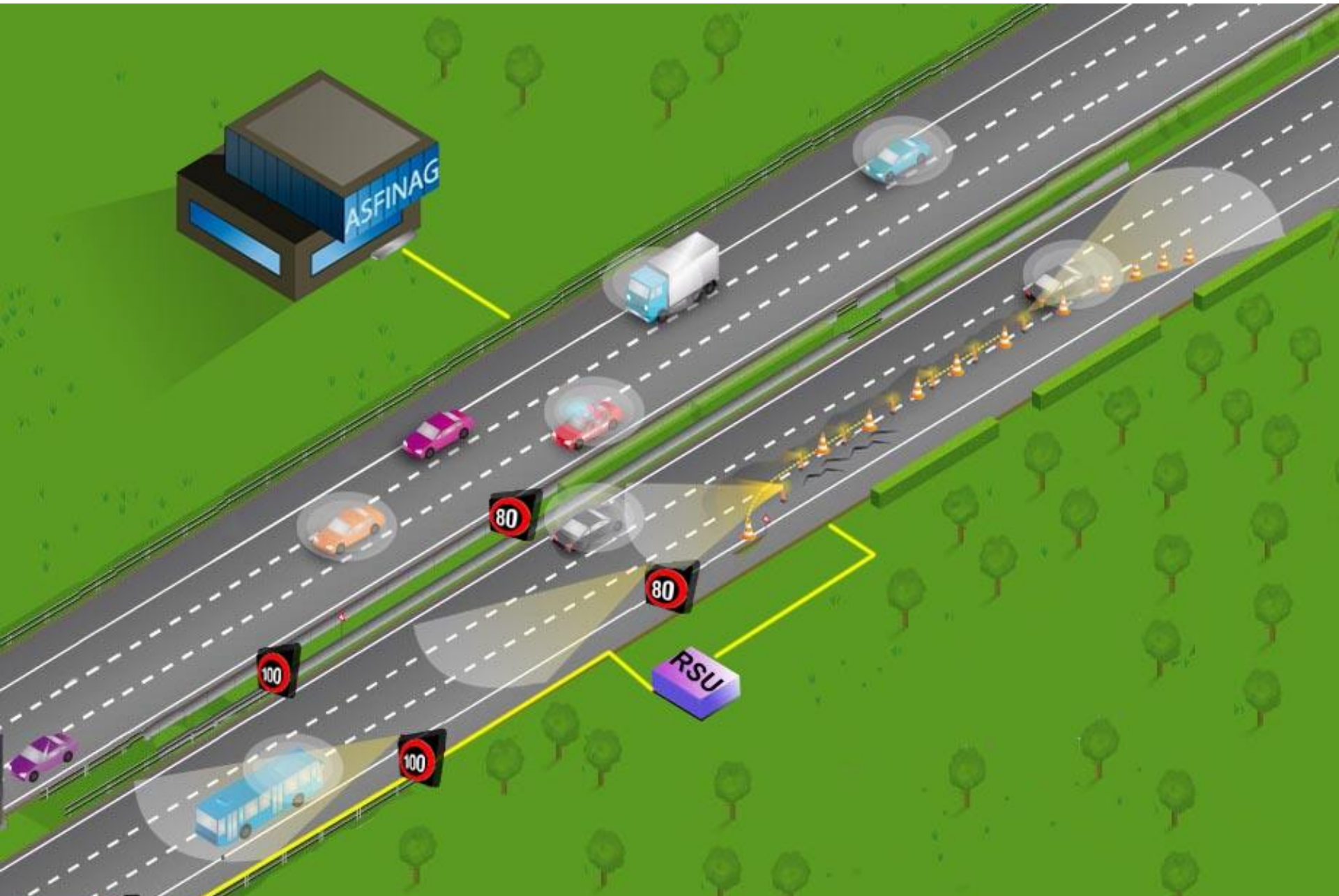


Digital Road Operator

ASFINAG CONTENT
Data interfaces standardized




The Cooperative Construction Site



Speed restriction 
Regulatory sign 

Incident information 
 

Services:
+ Route planner
+ APP  


construction site



The navigation app interface displays several warning cards on the left and a map on the right. The cards include: '1,8 km ahead Heavy Rain for 2,9 km' with a rain icon; '1,8 km ahead Accident Keep left!' with a warning sign icon; and 'Congestion 700 m to go' with a traffic jam icon. The map shows a road with various warning icons overlaid. At the bottom, it displays 'A13 Innsbruck', '95 km/h', a '100' speed limit sign, and a 'QASFINAG' logo.

Positioning and Key Messages

- Evaluation about specific events will become even more important in the future
- ASFINAG wants to provide data for OEMs
- Differentiation between not connected vehicles and connected vehicles
 - Not connected vehicles 1.0: via online traffic information, ASFINAG-companion for travelers, apps, etc.
 - Connected vehicles 2.0 >: Cooperation with OEMs for data exchange
 - Sign giving orders: Cooperation with OEMs in any case
 - Event warnings: Cooperation with OEMs for additional information



RELIABILITY ALL THE WAY.