

# The Broad Range of Funding Instruments in the Austrian FFG

Christian Pecharda, FFG

Vienna, 9th November 2017



„A GOOD COLLABORATION  
IS LIKE A GOOD **GLASS OF BEER**“



FFG

**Content:**

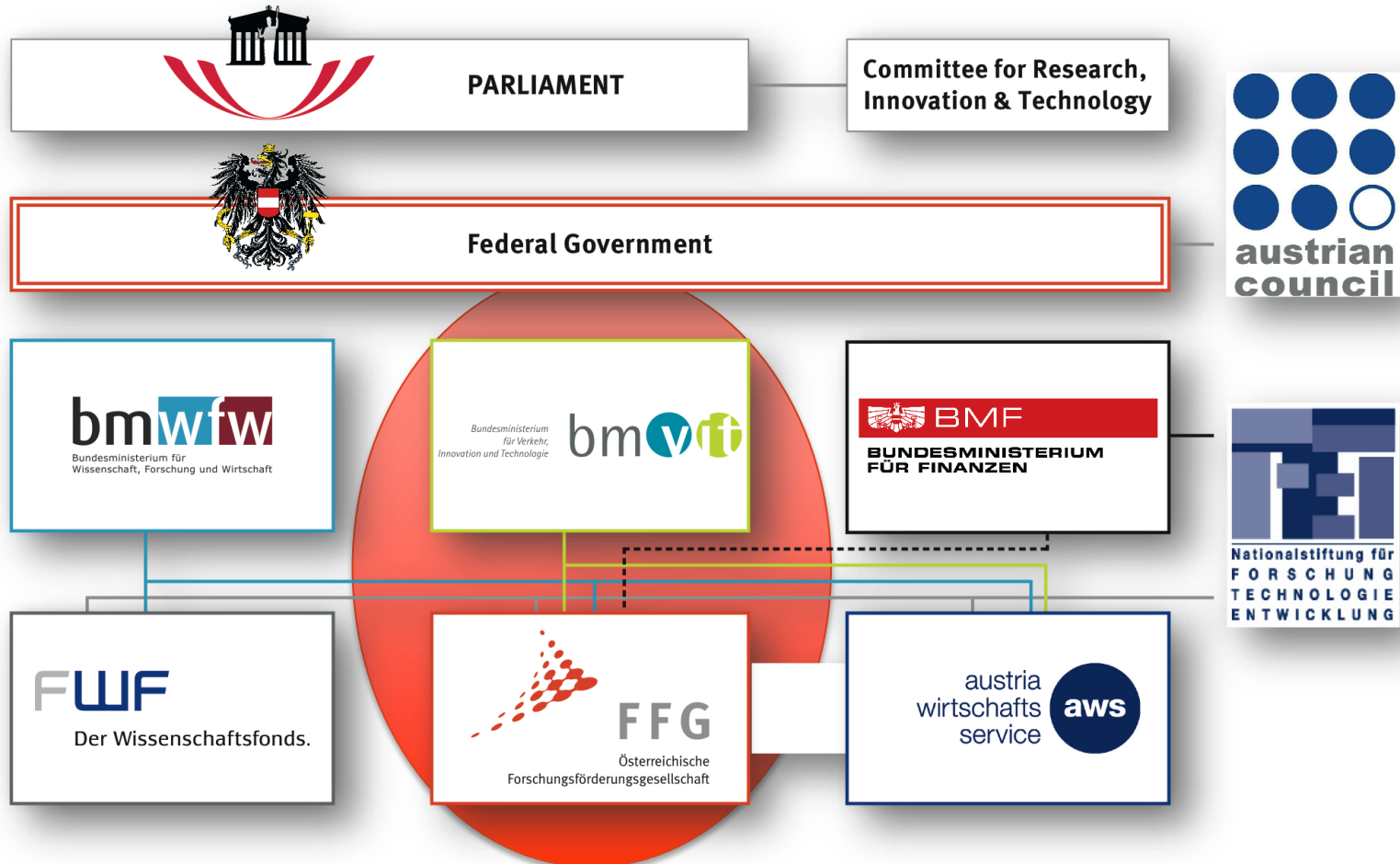
beer, or:  
topics and funding  
**(bmvit)**

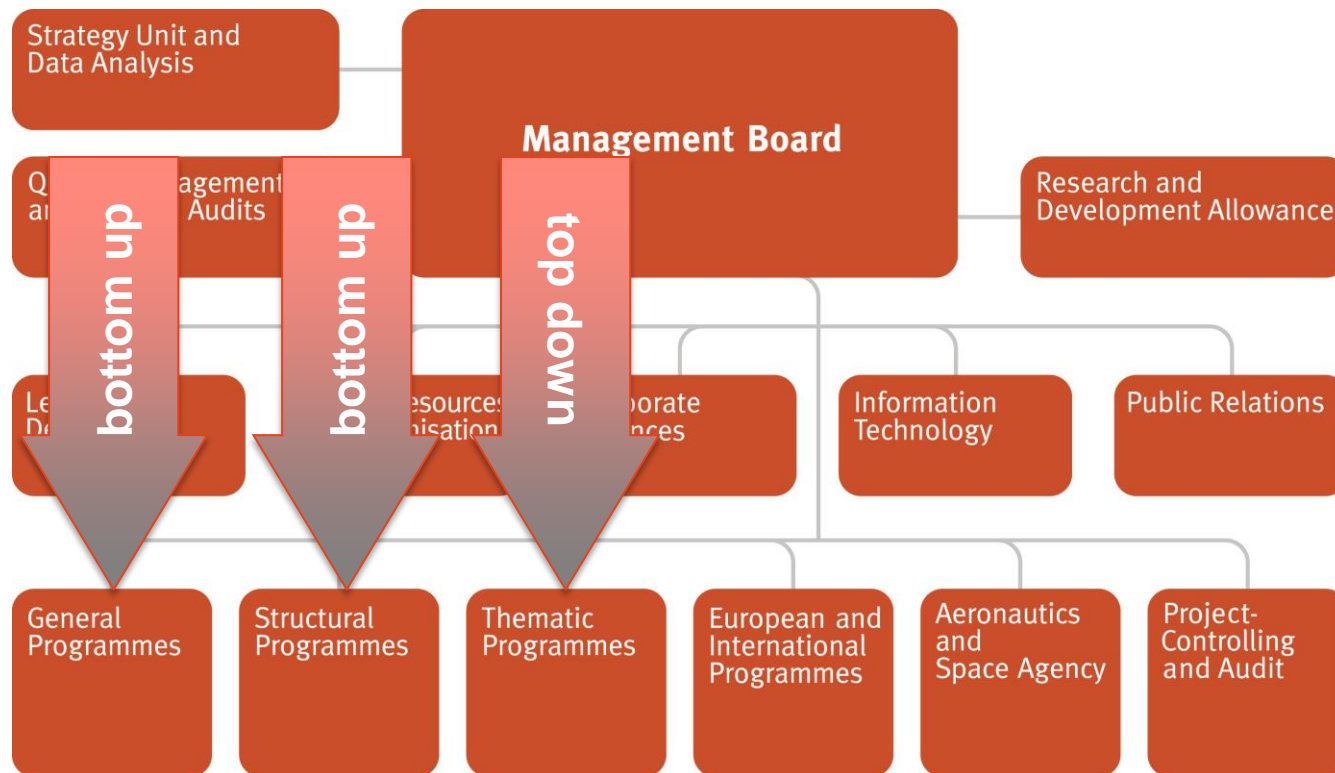
**Instruments:**

glass, or:  
transparency and equality  
**(FFG)**



# AUSTRIAN INNOVATION SYSTEM





# FFG-INSTRUMENTS



FFG

Gruppe	Instrument	Förderquote In % der förderbaren Kosten	Förderhöhe in Euro		
Einstieg	C1	Projektvorbereitung	80 %	≤ 6.000	
	XS	Innovationsscheck/klein	100 %	≤ 5.000	
		S	Innovationsscheck/groß	80 %	≤ 10.000
		C2	SP Patentscheck	80 %	≤ 10.000
	FEI-Projekt	M	Feasibility	max. 80 %	≤ 48.000
		L	Sondierung	40 – 80 %	≤ 0,2 Mio.
		E	Einzelprojekt – EE 1)	25 – 80 %	≤ 3 Mio.
Markteinführung	C3	I Einzelprojekt – IF 2)	40 – 70 %	≤ 1 Mio.	
	I_ES	Unternehmensprojekt Industrielle Forschung – I_ES 2)	45 – 70 %	≤ 1 Mio.	
		C4	E-I Kooperationsprojekt-EE-IF	35 – 80 %	≤ 2 Mio.
	C5	Leitprojekt	35 – 80 %	> 2 Mio.	
	C6	F Wissenschaftstransfer – BRIDGE / Frühphase	90 %	≤ 1 Mio.	
	B	Wissenschaftstransfer – BRIDGE 1	80 – 75 %	≤ 1 Mio.	
	C26-G	Orientierte Grundlagenforschung	max. 100 %	80.000 - 2 Mio.	
	C7	IT Markteinführungsprojekt - IT	25 – 35 %	≤ 0,2 Mio.	
		MS Markteinführungsprojekt – MS	max. 100 %	≤ 1 Mio.	

Struktur	C8	Z Kompetenzzentrum	40 – 55 %	1,7 Mio. – 5 Mio. / Jahr		
		P Plattform	35 – 45 %	≤ 0,45 Mio. / Jahr		
	C18	Gründerzentrum	max. 35 %	≤ 0,35 Mio./pro Jahr		
	C9	PJ	Strukturaufbau-Projekte	max. 70 %	≤ 2 Mio.	
		ST	Strukturaufbau – Studio	max. 70 %	≤ 1,3 Mio.	
	C21	F&E-Infrastruktur	50 – 85 %	spezifisch nach Ausschreibung		
	C10	Innovationsnetzwerk	40 – 80 %	≤ 0,5 Mio.		
	C23	Innovationslabor	50 %	spezifisch nach Ausschreibung		
	Personen	C11	S	Karriere-Check	max. 80 %	≤ 10.000
			M	Organisation & Personalentwicklung	50 – 70 %	≤ 50.000
		S	Praktikum/SchülerInnen	Pauschale	1.000	
C12		M	Praktikum/StudentInnen	max. 50 %	≤ 10.800	
		L	Dissertationen	max. 50 %	≤ 0,1 Mio.	
C13		Grants	80 – 100 %	≤ 2.000		
C14		Netzwerk-Forschung-Schule	max. 100 %	≤ 130.000		
C15		S	Qualifizierungsnetzwerk/klein	50 – 100 %	≤ 50.000	
		M	Qualifizierungsnetzwerk/mittel	50 – 100 %	≤ 0,5 Mio.	
		L	Qualifizierungsnetzwerk/groß	50 – 100 %	≤ 1 Mio.	
C19	Stiftungsprofessur	max. 80 %	≤ 2 Mio.			
C24	Fellowship	max. 100 %	100.000 - 500.000			
Aufwendungen	C17	F&E-Dienstleistungen	max. 100 % Finanzierung			
	C20	Vorkommerzielle Beschaffung (PCP)	max. 100 % Finanzierung			

[www.ffg.at](http://www.ffg.at)

# 3 MOST RELEVANT INSTRUMENTS

## >> OVERVIEW



Instrument	Cooperative R&D	Flagship	Innovationlab
<b>Funding</b>	min. 100.000 max. 2 Mio. EUR	min. 2 Mio. EUR	max. 5 Mio. EUR
<b>Fundingrate</b>	35 % - 80 %	35 % - 80 %	50 %
<b>Duration</b>	max. 36 months	max. 48 months	max. 120 months
<b>Cooperation</b>	required	required	possible
<b>Activity</b>	Research & Development	Research & Development & Demonstration	Construction & Operation of the lab

# INSTRUMENT

## >> COOPERATIVE R&D PROJECTS



- Research & Development activities
- collaborations of several consortium partners
- **Industrial Research** or **Experimental Development**
  - ✓ Grade of **Innovation**
  - ✓ Development **Risk**
  - ✓ Time to **Market**
  - ✓ Technology Readiness Level (**TRL**)

# TECHNOLOGY READINESS LEVELS (TRL)



Industrial research

**TRL 2** (Technology) concept formulated

**TRL 3** Experimental proof of (technology) concept at component level

**TRL 4** Technology validated in lab (on lab scale) at system level

Experimental development

**TRL 5** Technology validated in relevant environment (industrially relevant environment in the case of key enabling technologies)

**TRL 6** Technology demonstrated in relevant environment (industrially relevant environment in the case of key enabling technologies)

**TRL 7** System prototype demonstrated in operational environment

**TRL 8** System complete and qualified



# COOPERATIVE R&D PROJECTS >> INDUSTRIAL RESEARCH



- The focus is on planned research or critical investigation to **acquire new knowledge and abilities**
- Industrial research takes place mainly in the **laboratory or at laboratory scale**
- The development **risk** is higher than for experimental development
- The time **horizon for market** introduction is longer
- The **technology readiness level** is lower

# COOPERATIVE R&D PROJECTS >> EXPERIMENTAL DEVELOPMENT



- **acquiring** existing knowledge and abilities
- **combining** existing knowledge and abilities
- **shaping** existing knowledge and abilities
- **using** existing knowledge and abilities

- Large scale **visibility**
- **Strategic** importance
- **Signal effect** for several economic sectors
- **Research and development activities** as well as demonstration
- **Cooperation** of several consortium partners  
(max. 50% of costs by Research Institutes)
- **Combination** of industrial research and experimental development in different work packages possible

# WHO IS ELEGIBLE?

## >> COOPERATIVE R&D and FLAGSHIP



- **Companies** of any legal form
- **Institutions of research and knowledge dissemination**
  - **Universities** and universities of applied sciences
  - Non-university **research institutions**
  - Technology transfer institutions, innovation agents and other research-oriented organisations such as associations with a relevant purpose
- **Other non-commercial institutions**
  - Local authorities and autonomous bodies
  - Non-profit making organisations such as NPOs

# WHAT COSTS ARE ELIGIBLE?

## >> COOPERATIVE R&D and FLAGSHIP



Eligible costs must be **allocable directly to the project**.

- they are incurred **additionally** to the normal operating costs during the **funding period**
- they are in accordance with the **Funding Contract**
- they can be **evidenced by receipts**

# WHAT ARE THE FUNDING RATES? >> COOPERATIVE R&D & FLAGSHIP



Type of organisation	Research category	
	Industrial research	Experimental development
Small enterprise	<b>80 %</b>	<b>60 %</b>
Medium-sized enterprise	<b>70 %</b>	<b>50 %</b>
Large enterprise	<b>55 %</b>	<b>35 %</b>
Research institutions *)	<b>85 %</b>	<b>60 %</b>
Non-commercial institutions *)	<b>80 %</b>	<b>60 %</b>

\*) *non-commercial activities*

- allows **open access to RTI infrastructure** and / or specific expertise to them
- provides an organizational **basis for knowledge transfer** and cooperation in innovation projects
- and supports access to users in a **real development environment.**
- **Construction and operation** of the Innovationlab is supported (operator only) >> funding rate is 50%
- **NO R&D activities** are supported!

- **Urban Mobility Lab (UML)**
  - novel, experimental environments in which innovative mobility and transport solutions can be researched, tested and implemented by science and business in cooperation with citizens, politicians, administrators and other stakeholder groups
- **ALP.Lab**
  - Austrian Testcenter for automated driving
  - from the simulation to the test on the road full digital continuity



**There is one more thing!**

# DID YOU KNOW? >> ENTRY



<b>Instrument</b>	<b>Innovationscheck</b>	<b>Feasibility</b>
<b>Funding</b>	10.000 EUR	max. 48.000 EUR
<b>Fundingrate</b>	80 % - 100 %	60%
<b>Duration</b>	12 Months	max. 12 Months
<b>Target group</b>	SME → research organisation	SME, University,
<b>Activity</b>	Development of Concepts, preparation for R&D	Proof of concept

# DID YOU KNOW?

## >> R&D-PROJECTS (BOTTOM UP)



FFG

<b>Instrument</b>	<b>Single Project (BP)</b>	<b>BRIDGE</b>
<b>Funding</b>	max. 3,0 Mio EUR	max. 1,0 Mio EUR
<b>Fundingrate</b>	25 % - 60 %	60 % - 75 % (- 90 %)
<b>Duration</b>	12 Months (continue up to 60 Months)	max. 36 Months
<b>Target group</b>	Enterprises	Research Organisation, University
<b>Activity</b>	Experimental Development	R&D, cooperation between science & economy

# DID YOU KNOW? >> MARKET LAUNCH



<b>Instrument</b>	<b>Markt.Start</b>	<b>Patent.Scheck</b>
<b>Funding</b>	max. 1,0 Mio EUR	max. 10.000 EUR
<b>Fundingrate</b>	100 % (Loan !)	80 %
<b>Duration</b>	max. 36 Months	12 - 24 Months
<b>Target group</b>	SME, Start-Ups	SME, Start-Ups
<b>Activity</b>	support successfully finished R&D projects	Patent research, consultation for patent application

# DID YOU KNOW? >> STRUCTUR



<b>Instrument</b>	<b>Center of Excellence</b>	<b>R&amp;D Infrastructure</b>
<b>Funding</b>	max. 5,0 Mio EUR (+ funding from Bundesländer)	max. 2,0 Mio EUR
<b>Fundingrate</b>	40 % - 55 %	50 %
<b>Duration</b>	90 – 120 Months	max. 60 Months
<b>Target group</b>	Min. 1 scientific and 5 economic partner	Enterprises, Research Organisation, University
<b>Activity</b>	Experimental Development	Construction & Operation of the R&D Infrastructure

# DID YOU KNOW? >> PERSONS



<b>Instrument</b>	<b>Practical training (students)</b>	<b>Foundation Professorship</b>
<b>Funding</b>	max. 10.600 EUR	max. 1,5 Mio EUR
<b>Fundingrate</b>	max. 50 %	50 %
<b>Duration</b>	1-6 Months	60 Months
<b>Target group</b>	Enterprises, Research Organisation, University	University
<b>Activity</b>	practical training for students	Strategic expansion of research skills

# SELECTION CRITERIA >> ALL INSTRUMENTS



- **Quality** of the project
- **Suitability** of the applicant / project partners
- **Benefit** and exploitation
- **Relevance** to the call

**>> transparency and equality**

christian.pecharda@ffg.at



FFG

# QUESTIONS?

**DANKE**